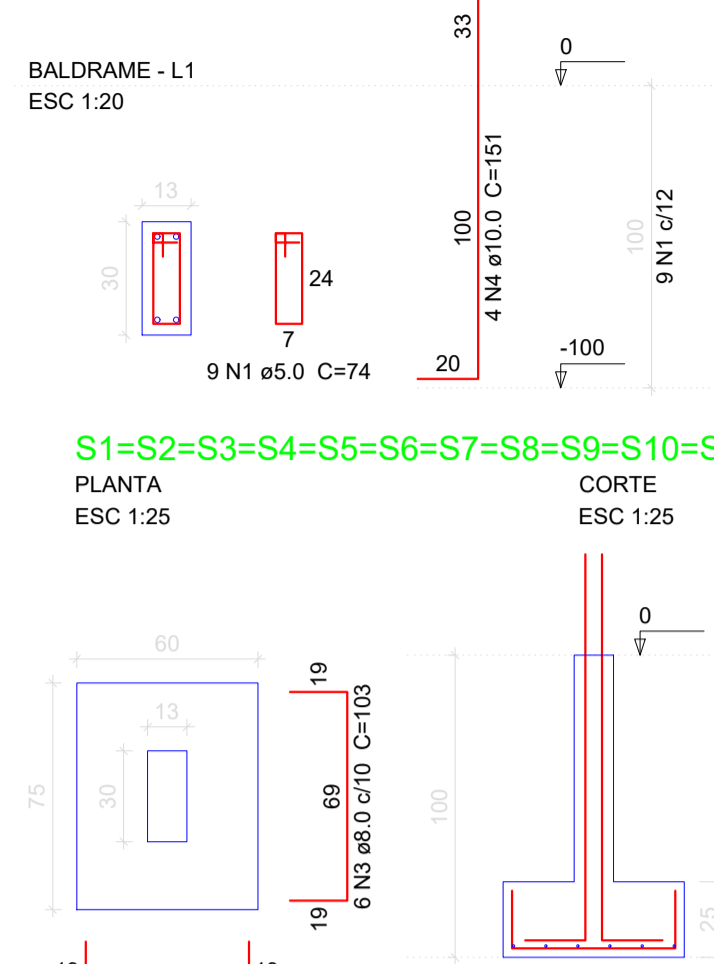
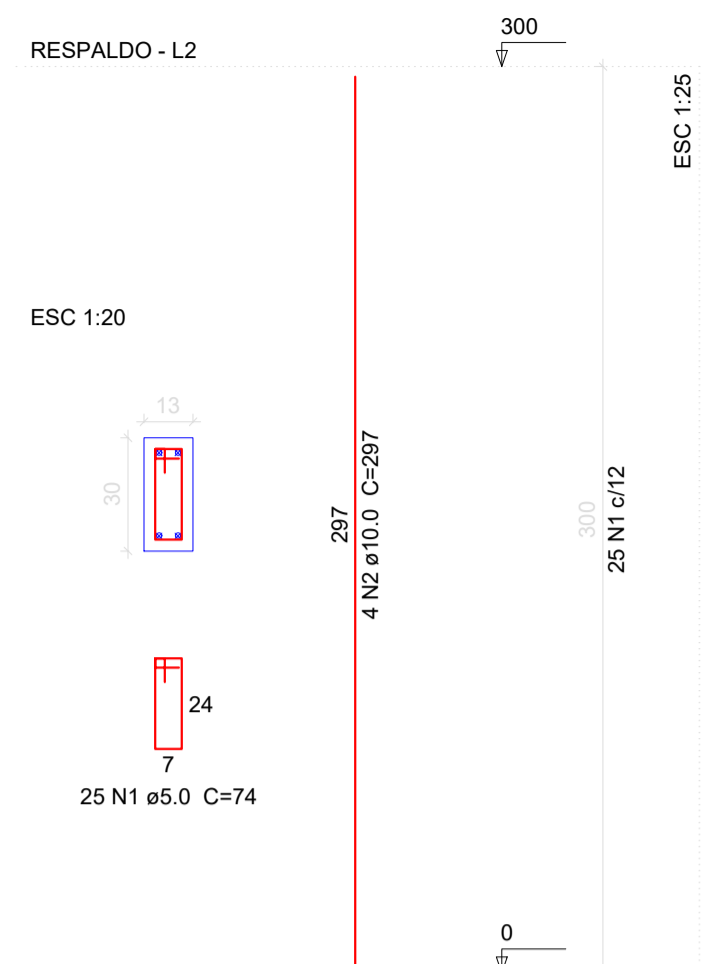


P1=P2=P3=P4=P5=P6=P7=P8=P9=P10=P11

P1=P2=P3=P4=P5=P6=P7=P8=P9=P10=P11



Relação do aço

11xP1	11xS1				
AÇO	N	DIAM (mm)	QUANT (Barras)	UNIT (cm)	C.TOTAL (cm)
CA60	1	5.0	99	74	7326
CA50	2	8.0	66	88	5808
CA60	3	8.0	66	103	6798
CA50	4	10.0	44	151	6644

Relação do aço

AÇO	N	DIAM (mm)	QUANT (Barras)	UNIT (cm)	C.TOTAL (cm)
CA60	1	5.0	275	74	20350
CA50	2	10.0	44	297	13068

Resumo do aço

AÇO	DIAM (mm)	C.TOTAL (m)	PESO + 10 % (kg)
CA50	10.0	130.7	88.6
CA60	5.0	203.5	34.5
PESO TOTAL (kg)			
CA50			88.6
CA60			34.5

Volume de concreto (C-30) = 1.29 m³
Área de forma = 28.38 m²

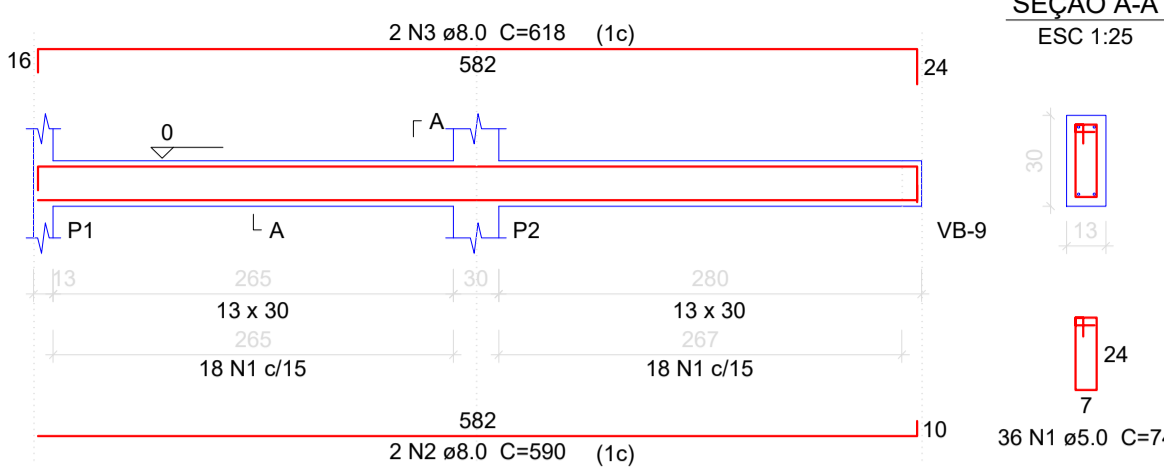
Resumo do aço

AÇO	DIAM (mm)	C.TOTAL (m)	PESO + 10 % (kg)
CA50	8.0	128.1	54.7
CA60	10.0	66.5	45.1
CA60	5.0	73.3	12.4
PESO TOTAL (kg)			
CA50			99.8
CA60			12.4

Volume de concreto (C-30) = 0.43 m³
Volume de concreto (C-25) = 1.24 m³
Área de forma = 16.89 m²

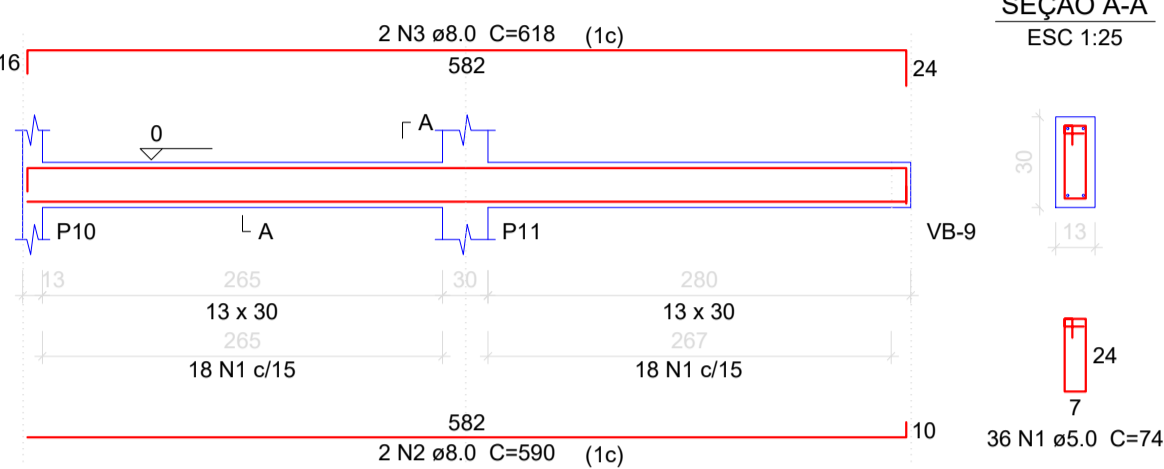
VB-1

ESC 1:50



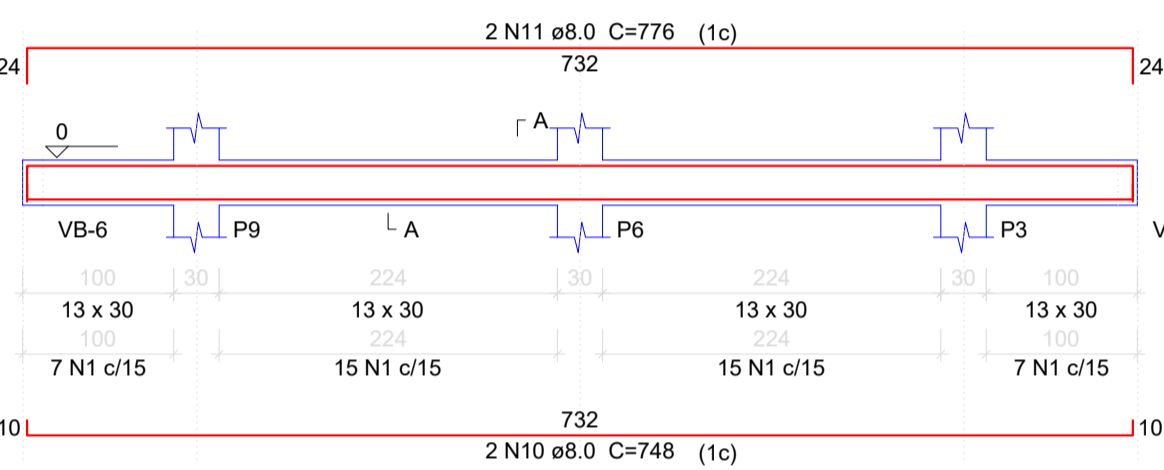
VB-6

ESC 1:50



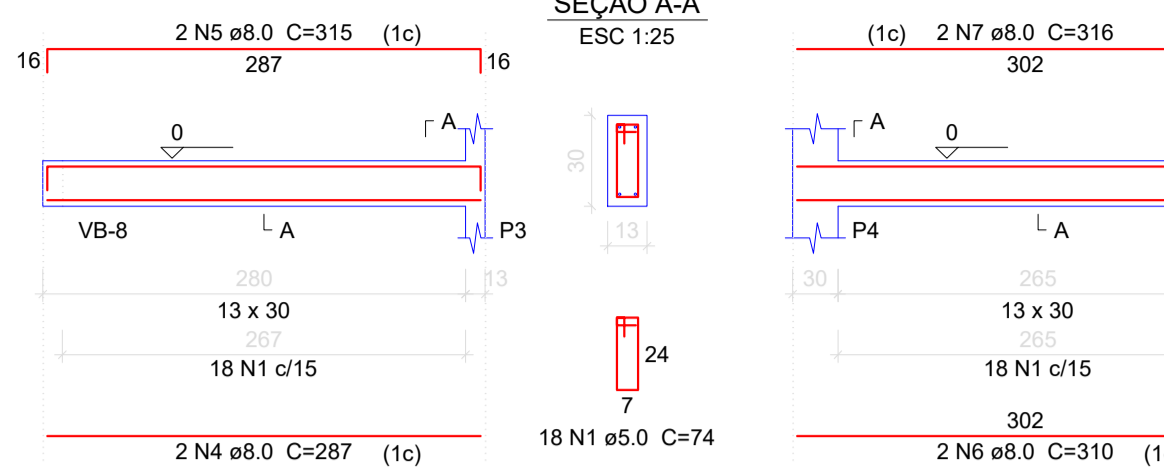
VB-9

ESC 1:50



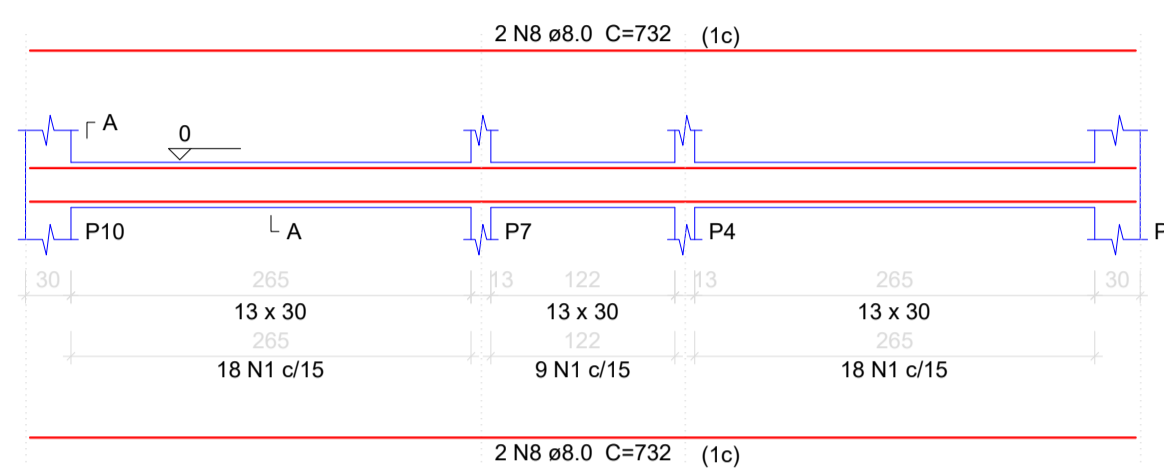
VB-2

ESC 1:50



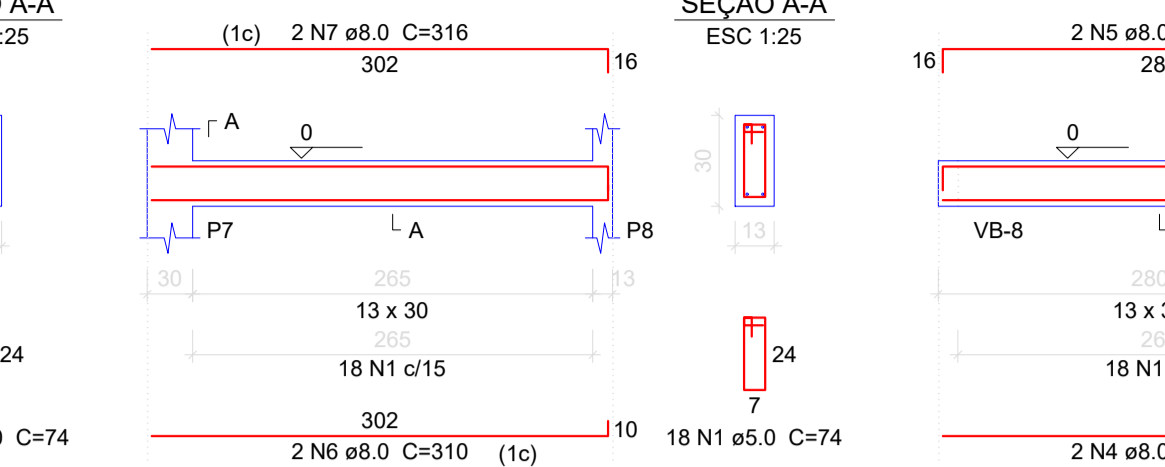
VB-7

ESC 1:50



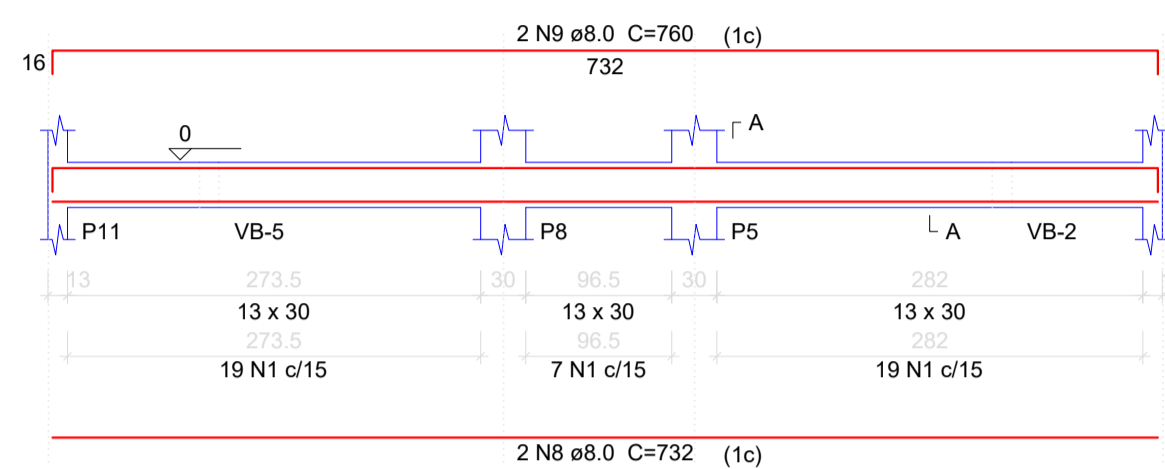
VB-3

ESC 1:50



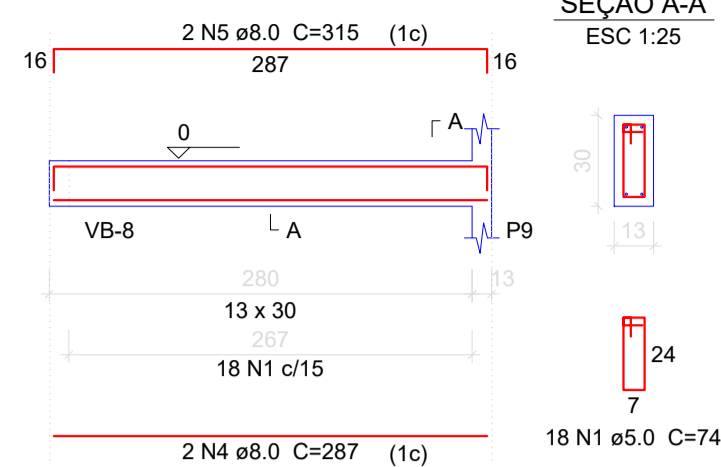
VB-8

ESC 1:50



VB-5

ESC 1:50



Relação do aço

AÇO	N	DIAM (mm)	QUANT (Barras)	UNIT (cm)	C.TOTAL (cm)
CA60	1	5.0	278	74	20572
CA50	2	8.0	4	590	2360
CA50	3	8.0	4	618	2472
CA60	4	8.0	4	287	1148
CA60	5	8.0	4	315	1260
CA60	6	8.0	4	310	1240
CA60	7	8.0	4	316	1264
CA60	8	8.0	6	732	4302
CA60	9	8.0	2	760	1520
CA60	10	8.0	2	748	1496
CA60	11	8.0	2	776	1552

Resumo do aço

AÇO	DIAM (mm)	C.TOTAL (m)	PESO + 10 % (kg)
CA60	8.0	187.1	81.2
CA60	5.0	205.8	34.9
PESO TOTAL (kg)			
CA50			81.2
CA60			34.9

Volume de concreto (C-30) = 1.79 m³
Área de forma = 33.52 m²

TEMPO DE DESFORMA DE ELEMENTOS ESTRUTURAIS	
TIPO DO ELEMENTO ESTRUTURAL	DESFORMA
Fundos de vigas com menos de 3 m de vão	7 dias
Fundos de vigas com vão entre 3 m e 6 m	14 dias
Fundos de vigas com vão maior que 6 m	21 dias
Lajes com vão menores que 3 m	7 dias
Lajes com vão entre 3 m e 6 m	14 dias
Lajes com vão maior que 6 m	21 dias
Pilares	3 dias
Fôrmas laterais de vigas	1 dia
Marquises e sacadas	21 dias
Escadas	14 dias

Relação do aço

AÇO	N	DIAM (mm)	QUANT (Barras)	UNIT (cm)	C.TOTAL (cm)
CA60	1	5.0	278	74	20572
CA50	2	8.0	2	94	188
CA50	3	8.0	2	310	2480
CA50	4	8.0	4	331	1324
CA50	5	8.0	4	287	1148
CA50	6	8.0	4	315	1260
CA50	7	8.0	4	330	1320
CA50	8	8.0	4	732	2928
CA50	9	8.0	4	760	3040
CA50	10	8.0	2	532	1064
CA50	11	8.0	2	560	1120
CA50	12	10.0	4	314	1256
CA50	13	10.0	4	324	1296
CA50	14	10.0	4	132	528
CA50	15	10.0	4	157	628

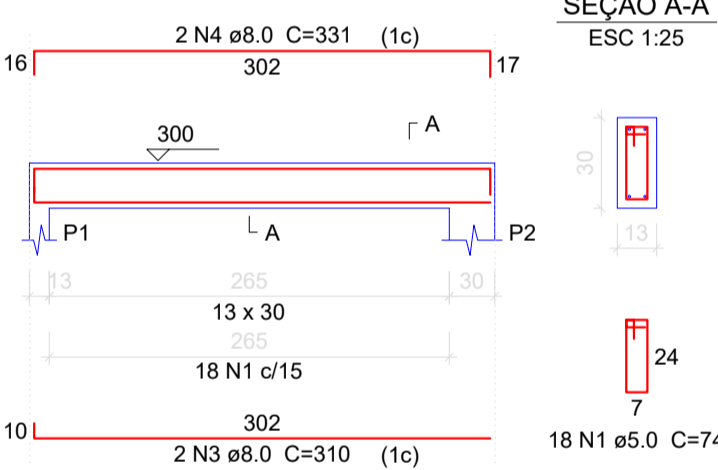
Resumo do aço

AÇO	DIAM (mm)	C.TOTAL (m)	PESO + 10 % (kg)
CA50	8.0	1.9	0.5
CA50	8.0	156.9	68.1
CA50	10.0	37.1	25.1
CA60	5.0	205.8	34.9
PESO TOTAL (kg)			
CA50			93.7
CA60			34.9

Volume de concreto (C-30) = 1.84 m³
Área de forma = 34.4 m²

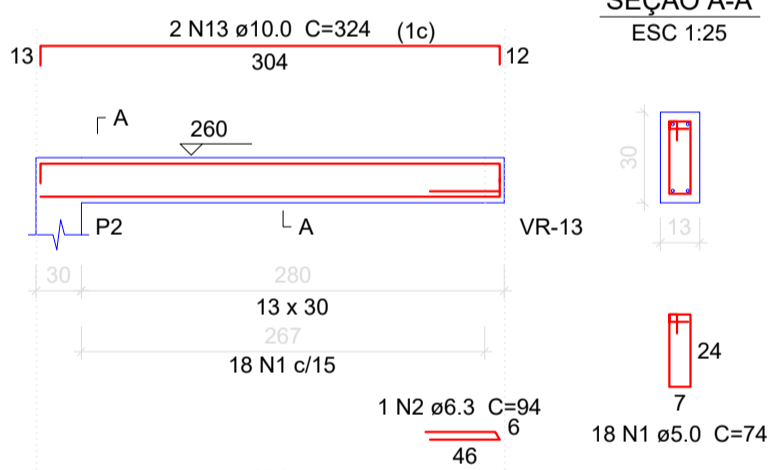
VR-1

ESC 1:50



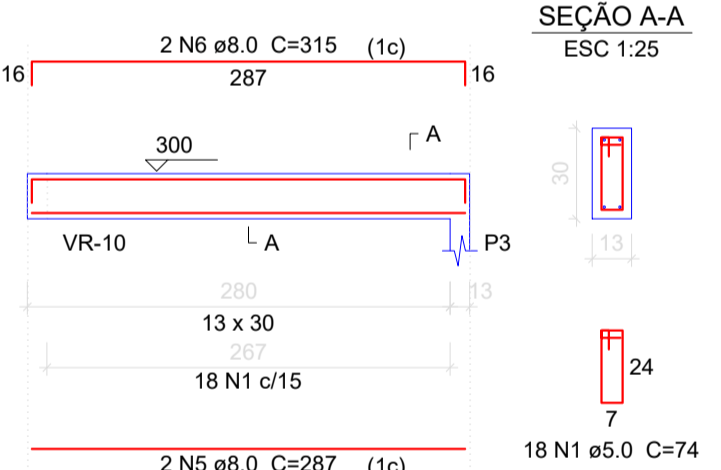
VR-2

ESC 1:50



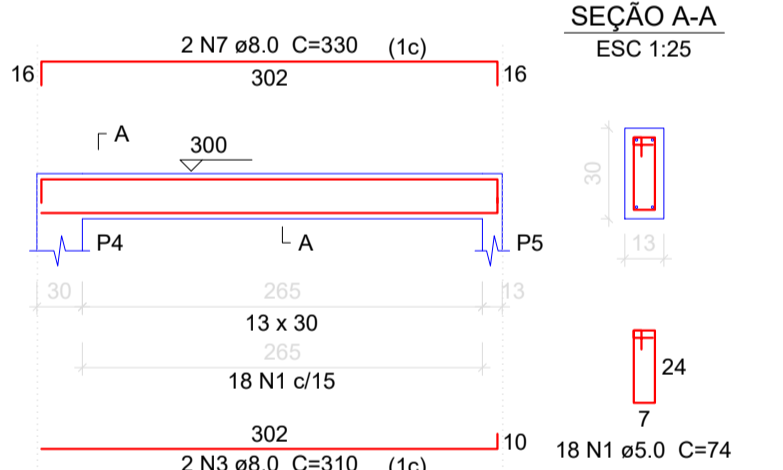
VR-3

ESC 1:50



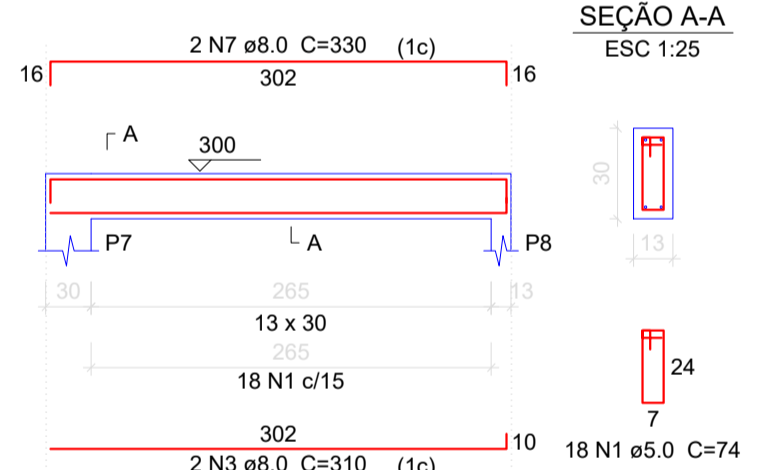
VR-4

ESC 1:50



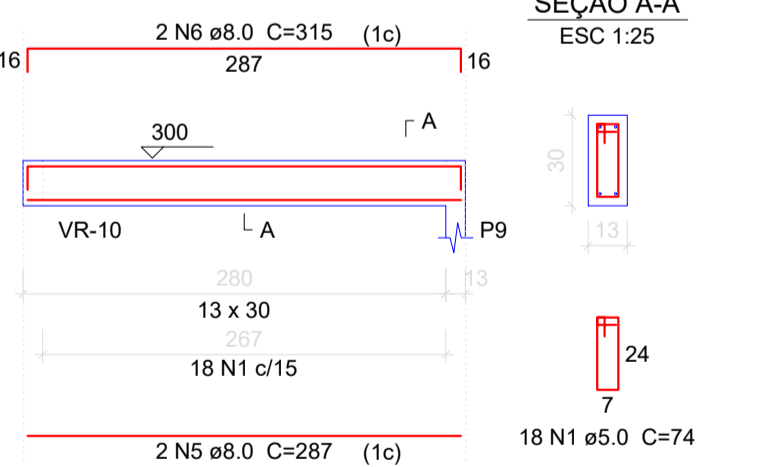
VR-5

ESC 1:50



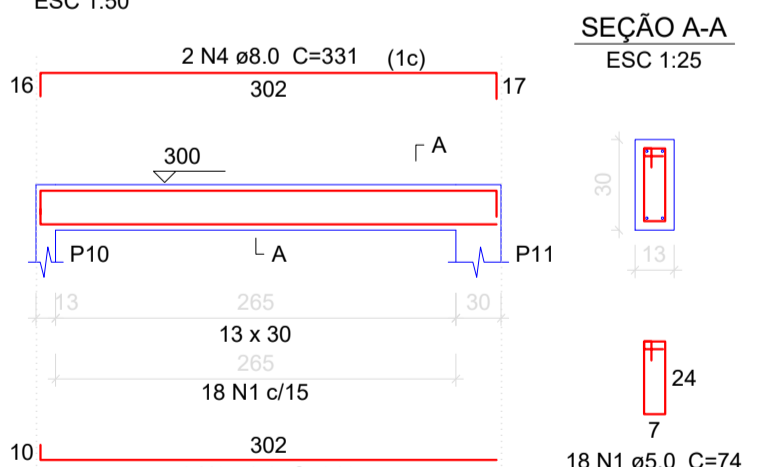
VR-6

ESC 1:50



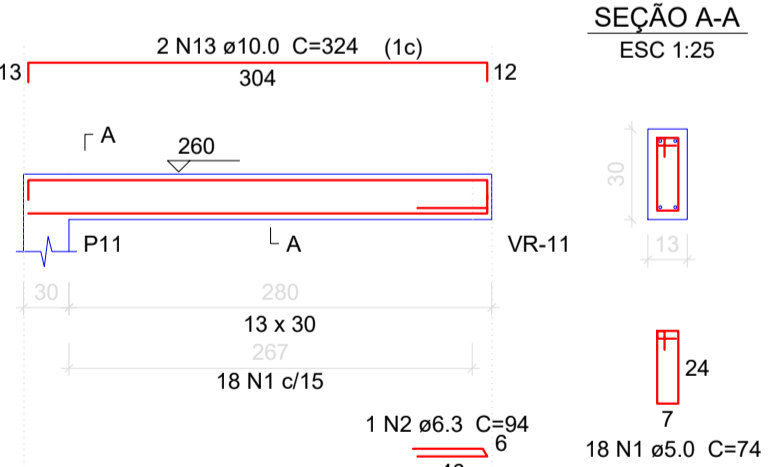
VR-7

ESC 1:50



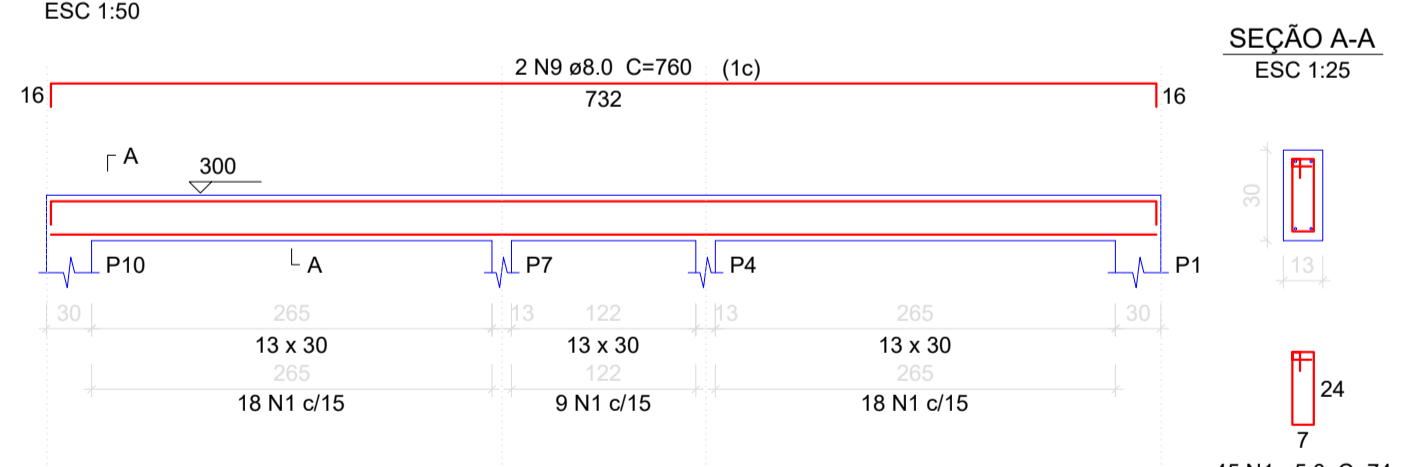
VR-8

ESC 1:50



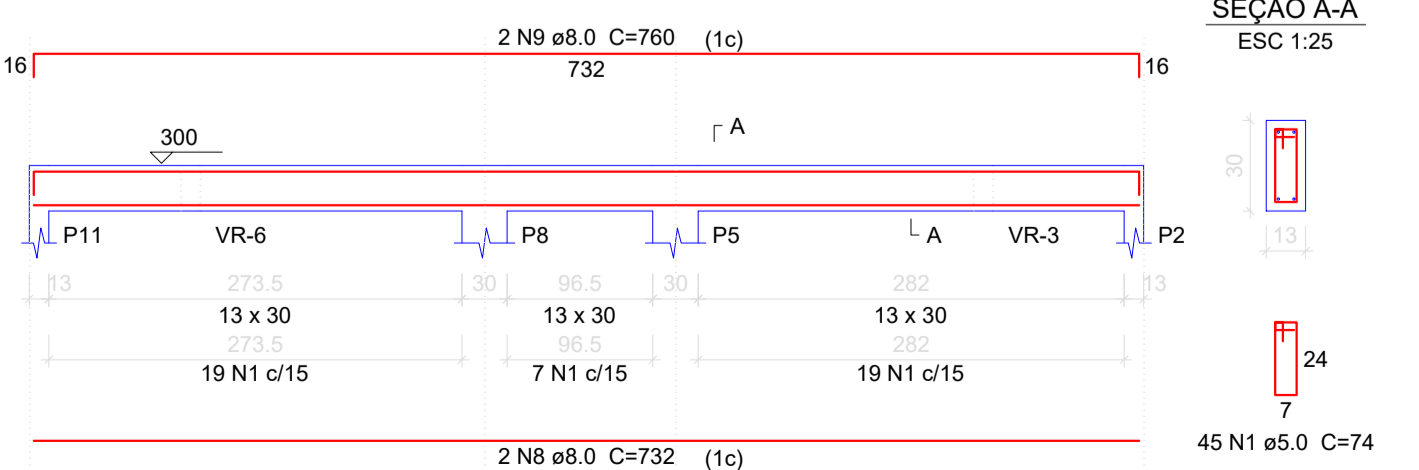
VR-9

ESC 1:50



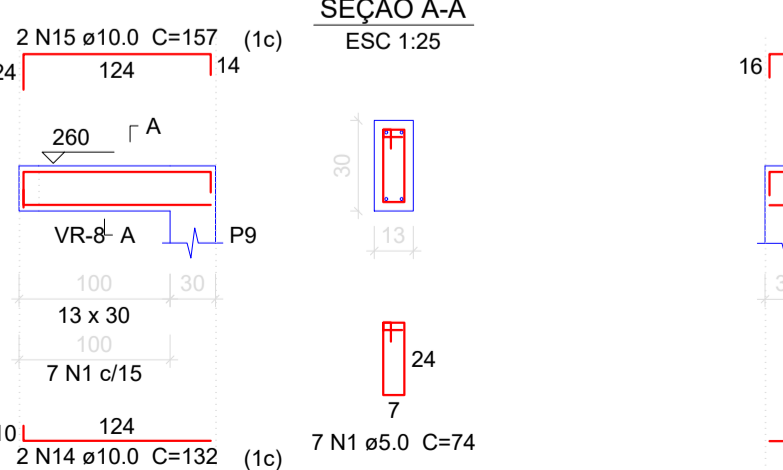
VR-10

ESC 1:50



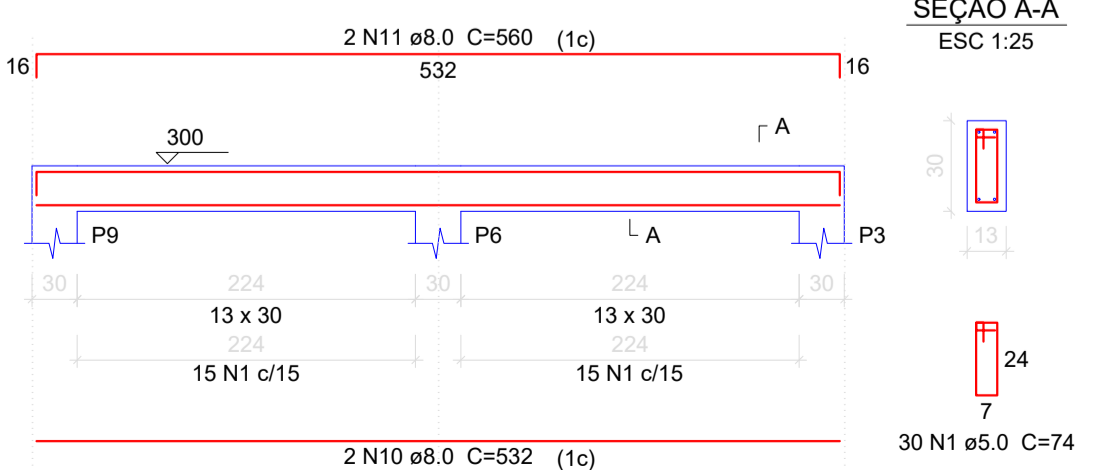
VR-11

ESC 1:50



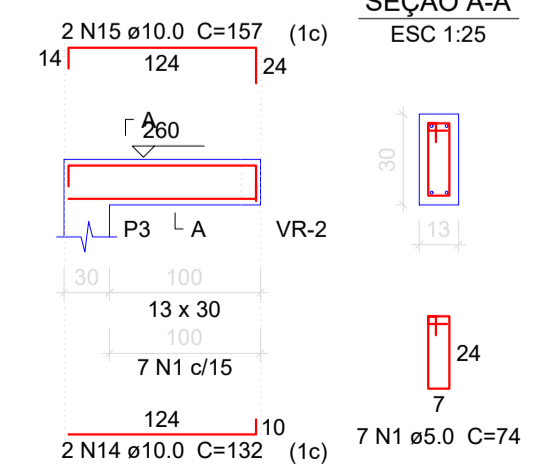
VR-12

ESC 1:50



VR-13

ESC 1:50



PROJETO **PROJETO ESTRUTURAL** FOLHA Nº 02/02
DETALHAMENTO DAS SAPATAS, PILARES, VIGAS BALDRAME E RESPALDO

OBRA: PROJETO PARA IMPLANTAÇÃO DE UMA EDIFICAÇÃO RESIDENCIAL UNIFAMILIAR DE ALVENARIA DE VEDAÇÃO, COM UM PAVIMENTO, DOIS QUATOS, FORRO DE PVC E TELHA FIBROCIMENTO.

ENDEREÇO DA OBRA: DISTRITO DE CAPOÁ VERDE
CIDADE: ALTO PARAGUAI - MT
DATA: AGOSTO, 2024

PROPRIETÁRIO: PREFEITURA MUNICIPAL DE ALTO PARAGUAI
CNPJ: 03.648.532/0001-28

PROJETO: ENGENHEIRO CIVIL
CREA: